



Lambert Road, Brixton, SW2

3 bedroom flat - conversion for sale

£665,000

Share of Freehold

Property Details

Stunning and versatile three double bedroom, two bathroom semi-detached Victorian conversion, beautifully presented throughout and extending to over 1,000 square feet, offering a bright and private ambience with generous proportions ideal for modern living. The heart of the home is the impressive open-plan kitchen and reception, flooded with natural light from three elegant arched sash windows and enjoying a sunny south-facing aspect. Contemporary flooring enhances the sense of flow, with a comfortable lounge area and a sleek, minimalistic kitchen arranged along one wall. Fully integrated appliances, generous storage and a sociable peninsular breakfast bar beneath feature pendant lighting create an inviting and functional space. Also on this level is a versatile rear-facing double bedroom, ideal as a dining room or second reception if preferred, complete with fitted understairs wardrobes. Adjacent sits a luxurious main bathroom with freestanding bath and walk-in rain shower. Upstairs, the principal bedroom enjoys city skyline views, a wardrobe nook and stylish open en-suite, while the third double bedroom benefits from southerly light, Velux windows and eaves storage.

Features

- Three double bedrooms
- Two bathrooms
- Semi-detached Victorian conversion
- Over 1,000 square feet split over two floors
- City views from main bedroom
- Bright and private ambience
- Sought-after residential street with access to Brixton and Clapham
- Northern and Victoria tube lines in walking distance
- Brockwell Park a short stroll away

Council tax band C

EPC rating B (81)

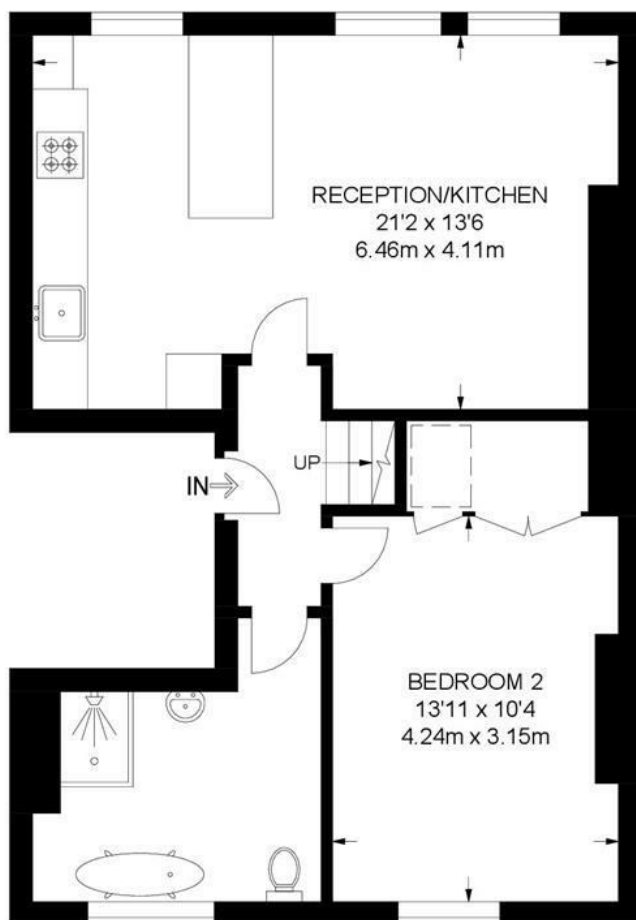




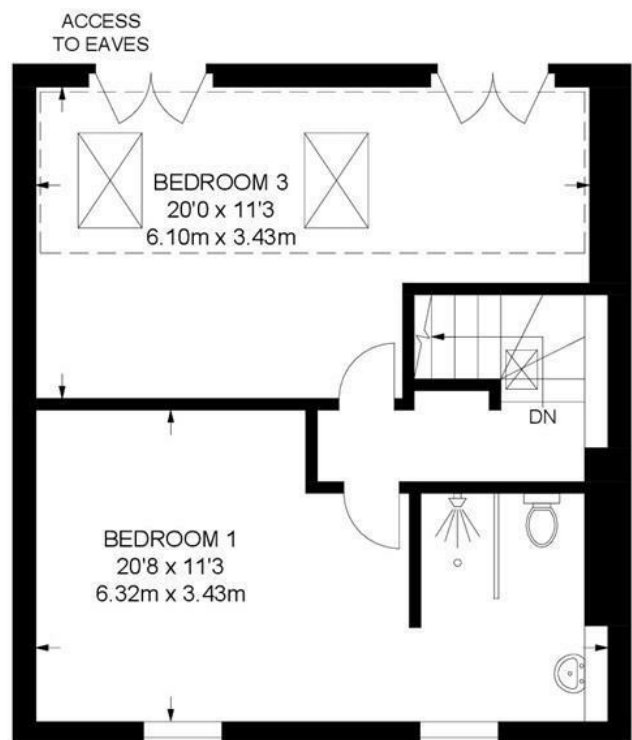
Lambert Road, Brixton, SW2

Lambert Road, SW2
3 Bedroom Flat

APPROXIMATE GROSS INTERNAL AREA: **1061 SQ FT / 98.6 SQ M**



SECOND FLOOR



THIRD FLOOR



While we try our very best, floor plans are produced as a guide only and we take no responsibility for the precise accuracy with which any property is represented.

Lambert Road, Brixton, SW2

